

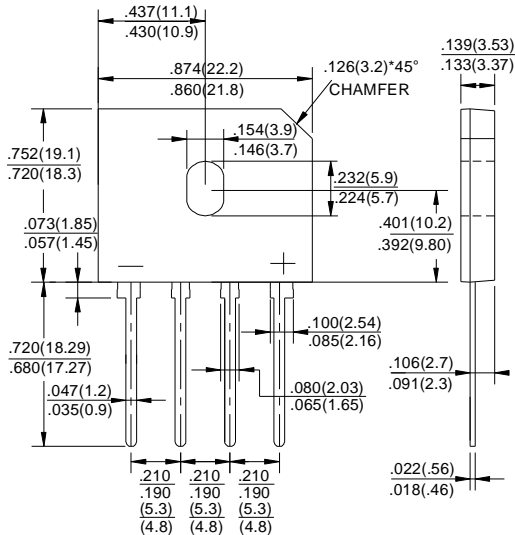


# GBU4005 THRU GBU410

## GLASS PASSIVATED BRIDGE RECTIFIERS

Reverse Voltage - 50 to 1000 Volts Forward Current - 4.0 Amperes

### GBU



Dimensions in inches and (millimeters)

### FEATURES

- ◆ Surge overload rating -175 amperes peak
- ◆ Ideal for printed circuit board
- ◆ Reliable low cost construction utilizing molded plastic technique
- ◆ Plastic material has U/L flammability classification 94V-0
- ◆ Mounting position: Any

### MAXIMUM RATINGS AND ELECTRICAL CHARACTERISTICS

Ratings at 25°C ambient temperature unless otherwise specified.  
Single phase half-wave 60Hz, resistive or inductive load, for capacitive load current derate by 20%.

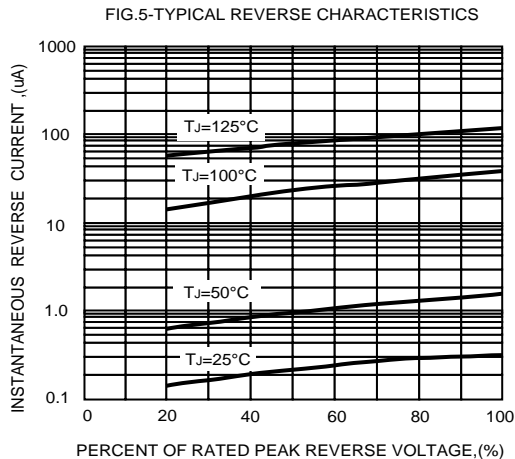
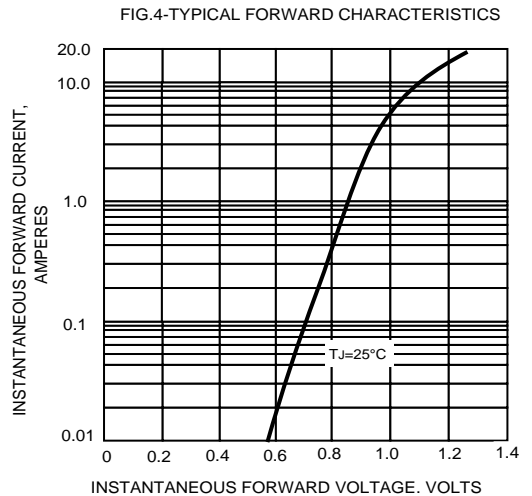
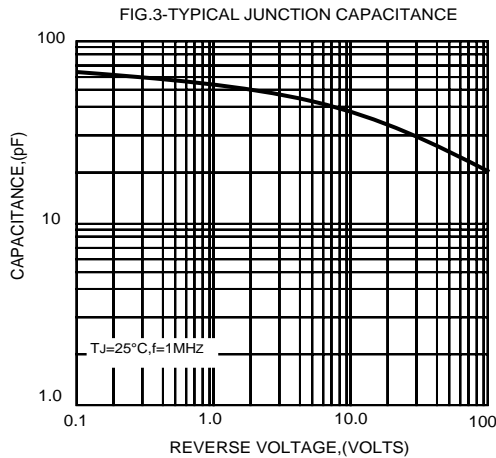
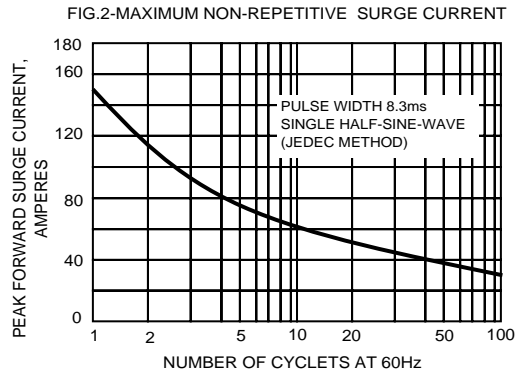
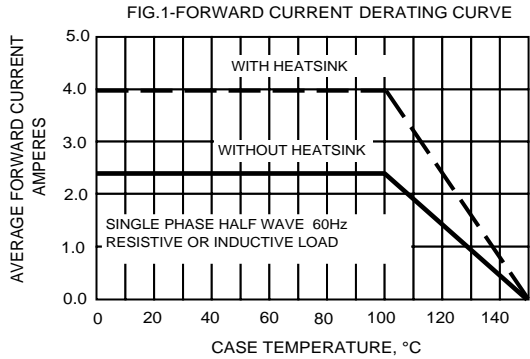
TWGMC Catalog Number	SYMBOLS	GBU 4005	GBU 401	GBU 402	GBU 404	GBU 406	GBU 408	GBU 410	UNITS
Maximum repetitive peak reverse voltage	$V_{RRM}$	50	100	200	400	600	800	1000	VOLTS
Maximum RMS voltage	$V_{RMS}$	35	70	140	280	420	560	700	VOLTS
Maximum DC blocking voltage	$V_{DC}$	50	100	200	400	600	800	1000	VOLTS
Maximum average forward (with heatsink NOTE 2) Rectified current @ $T_c=100^\circ\text{C}$ (without heatsink)	$I_{(AV)}$					4.0			Amps
Peak forward surge current 8.3ms single half sine-wave superimposed on rated load (JEDEC Method)	$I_{FSM}$					150.0			Amps
Rating for Fusing ( $t < 8.3\text{ms}$ )	$I^2t$					93			$\text{A}^2\text{s}$
Maximum forward voltage at 2.0A DC	$V_F$					1.0			Volts
Maximum forward voltage at 4.0A DC	$V_F$					1.1			Volts
Maximum DC reverse current $T_J=25^\circ\text{C}$ at rated DC blocking voltage $T_J=125^\circ\text{C}$	$I_R$					10			$\mu\text{A}$
						500			$\mu\text{A}$
Typical Junction Capacitance (Note 1)	$C_J$					45			pF
Typical Thermal Resistance (Note 2)	$R_{\theta JA}$					2.2			$^\circ\text{C}/\text{W}$
Operating junction temperature range	$T_J$					-55 to +150			$^\circ\text{C}$
storage temperature range	$T_{STG}$					-55 to +150			$^\circ\text{C}$

NOTES: 1. Measured at 1.0MHz and applied reverse voltage of 4.0V DC.

2. Device mounted on 75mm\*75mm\*1.6mm cu plate heatsink.

3. The typical data above is for reference only (典型值仅供参考).

# RATINGS AND CHARACTERISTIC CURVES GBU4005 THRU GBU410



The cruve graph is for reference only, can't be the basis for judgment(曲线图仅供参考)!